

**COLECO  
VISION™**

**CARTRIDGE  
INSTRUCTIONS**

# MR CHIN

- For one or two players
- Select from four skill levels



**Plays, sounds and scores like a real arcade  
arcade game!**

---

## GAME DESCRIPTION

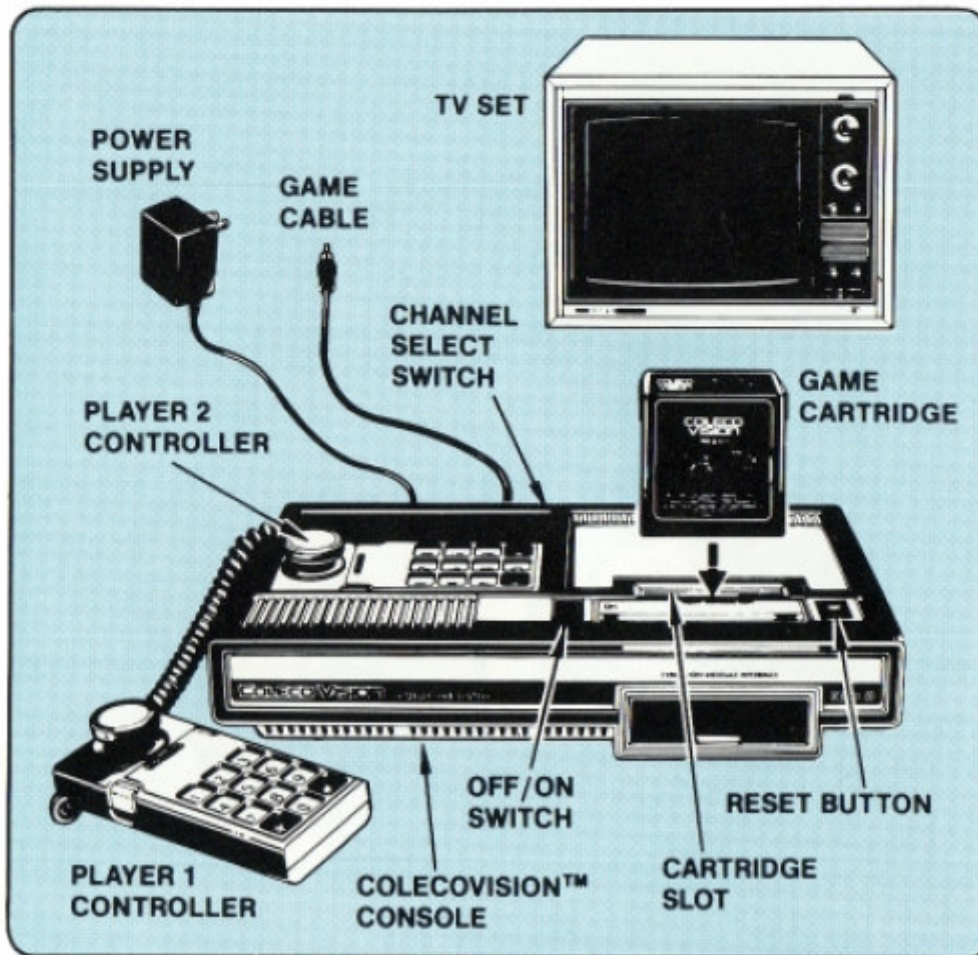
---

Clad in Chinese clothes and wearing a Chaplin moustache, our hero, Mr. Chin, China's proud plate-spinner hustles onto the stage! Five or six plates are kids stuff. How Many plates can you make him spin even with interference from rascals, and naughty plates wich tend to fall.. You will receive a standing ovation if you turn all the plates. A thrilling yet comical game sure to attract your heart!

---

## GETTING READY TO PLAY

---

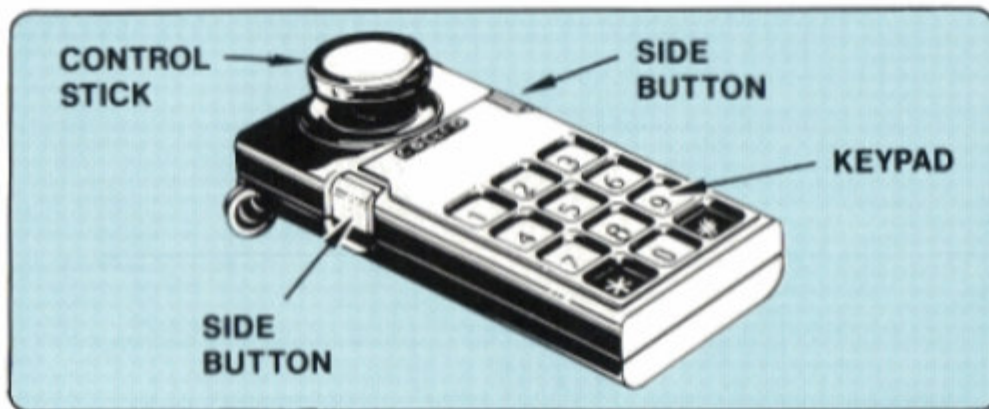


- Make sure the COLECOVISION™ console is connected to your TV. Make sure power supply is plugged into the console. Then plug power supply into a 110/120 volt AC outlet.
- TV should be on and tuned to same channel as the Channel Select switch on the console.
- **ALWAYS MAKE SURE COLECOVISION™ UNIT IS OFF BEFORE INSERTING OR REMOVING A CARTRIDGE.** Turn **Off/On** switch to **On** after cartridge has been inserted.

---

## USING YOUR CONTROLLERS

---



**NOTE:** For a one-player game, use the controller plugged into Port 1 (the rear jack). For a two-player game, Player 1 uses the controller plugged into Port 1; Player 2 uses the controller plugged into Port 2.

1. **Keypad:** Keypad Buttons 1-8 allow you to select a Game Option before beginning to play.
2. **Control Stick:** Pushing the Control Stick moves **Mr. Chin**® in the direction selected.
3. **Side Buttons:** Pressing Side Button make Mr. Chin Jump

---

## HERE'S HOW TO PLAY

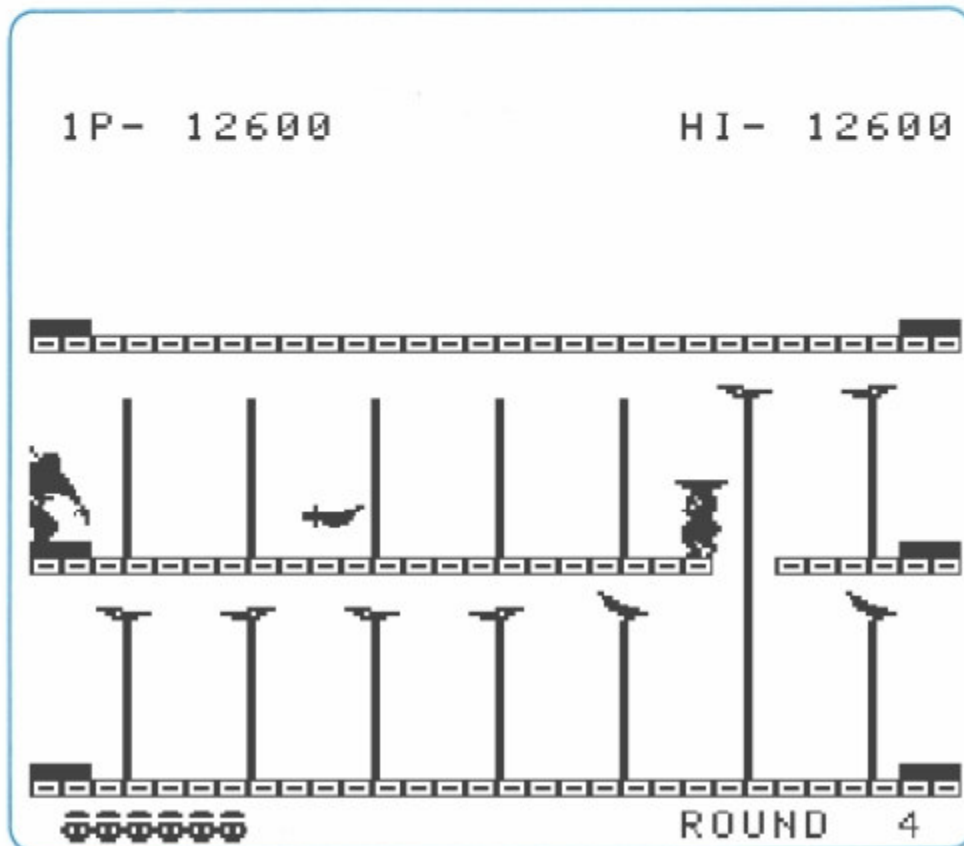
---

**NOTE:** If you are playing a two-player game, players take turns. Player 1 goes first.

### STEP 1: The choice is yours.

Press the Reset Button and the title screen for **Mr. Chin**<sup>®</sup> will appear on your TV. Wait for the Game Option screen to appear. It contains a list of game play options, numbered 1-8. Select one by pressing the corresponding number button on either controller keypad.

### STEP 2: Fire away!



---

## **SPECIAL THANKS**

---

**Daniel Bienvenu**  
**John Dondzilla**  
**Marcel DeKogel**  
**Eduardo Mello**  
**Luc Miron**  
**Scott Huggins**  
**Phillipp Klaus Krause**  
**Steve Begin**  
**Guy Foster**  
**M. Brent**

**Thanks for keeping the ColecoVision  
Homebrew Scene alive!**

## SCORING

### POINTS REQUIRED FOR BONUS LIVE

**Skill 1: 2500/5000/10000/20000/40000/80000**

**Skill 2: 5000/10000/20000/40000/80000**

**Skill 3: 10000/20000/40000/80000**

**Skill 4: No extra lives awarded**

Putting a plate in place give 100pts

---

## THE FUN OF DISCOVERY

---

This instruction booklet will provide the basic information you need to get started playing **Mr. Chin**<sup>®</sup>, but it is only the beginning! You will find that this cartridge is full of special features to make **Mr. Chin**<sup>®</sup>, exciting every time you play. Experiment with different techniques — and enjoy the game!

---

## 90-DAY LIMITED WARRANTY

---

Coleco warrants to the original consumer purchaser in the United States of any video game cartridge it manufactures, that the cartridge will be free of defects in material or workmanship for 90 days from the date of purchase under normal in-house use.

If your cartridge fails to operate properly DURING THE FIRST 90 DAYS AFTER PURCHASE, return it postage prepaid and insured, with your name, address, proof of the date of purchase and a brief description of the problem, to the Factory Service Station as listed. If your cartridge is found to be factory defective during the first 90 days, it will be repaired or replaced at no cost to you. If the cartridge is found to have been consumer damaged or abused it therefore will not be covered by the warranty, then you will be advised in advance of repair costs.

Coleco's sole and exclusive liability for defects in material and workmanship shall be limited to repair or replacement at its authorized Coleco Service Station, and Coleco shall in no event be liable for incidental, consequential contingent or any other damages, (some states do not allow the exclusion or limitation of incidental or consequential damages, so the above limitation or exclusion may not apply to you). This warranty does not obligate Coleco to bear the cost of transportation charges in connection with the repair or replacement of defective parts.

This warranty is invalid if the damage or defect is caused by accident, act of God, consumer abuse, unauthorized alteration or repair, vandalism or misuse.

This warranty is made in lieu of any other express warranty, and except for the foregoing warranty which is exclusive, there is no other express warranty being made.

**This warranty gives you specific legal rights, and you may have other rights which vary from state to state.**

Please read the Owner's Manual carefully before using the product. If a malfunction occurs, please refer to the trouble-shooting checklist in the Owner's Manual for your video system. If you cannot correct the malfunction after consulting the trouble-shooting checklist, please call the Factory Service Station listed in your video system manual.

### **CARTRIDGE SERVICE POLICY**

If your cartridge requires service after expiration of the 90 day Limited Warranty period, Coleco will service the cartridge and put it in working condition or replace it with a reconditioned unit (at our option), on receipt of your cartridge, postage prepaid and insured, with your check in the amount of \$10.00 payable to Coleco Industries, Inc.

**For service information regarding your Coleco cartridge call 1-800-842-1225. This service station is in operation from 8:00 a.m. to 4:30 p.m., Eastern time, Monday thru Friday.**

Coleco's service obligation does not apply to defects arising from abuse, misuse or alteration of the cartridge. If the cartridge is found to have been consumer damaged or abused it therefore will not be covered by the warranty, then you will be advised in advance of repair costs.

Please allow 4-6 weeks for repair and return.

All returns must be directed to: **Coleco Industries, Inc.**  
**Consumer Electronics Department**  
**P. O. Box 47**  
**Amsterdam, New York 12010**  
**Attention: Consumer Quality Manager**



**Mr. Chin are trademark of HAL Laboratory Inc. © 1984**

**© HAL Laboratory Inc.**

**Package, Program and Audiovisual © 1982 Coleco Industries, Inc. Amsterdam, New York 12010**

**Printed in U.S.A.**